

BALUSTRADE & POOL **PRODUCT SPEC GUIDE**



INDEX

PRODUCT SPEC GUIDE

GLASS BALUSTRADE COMPONENTS

STAINLESS STEEL SPIGOTS	PG 3-5
OFFSET HANDRAIL SYSTEM	PG 6-8
TOP MOUNT HANDRAIL SYSTEM	PG 9-12
FACE FIX ACCESSORIES	PG 13

GLASS POOL COMPONENTS

STAINLESS STEEL SPIGOTS	PG 14-16
GLASS CONNECTORS	PG 17-18
GLASS GATE COMPONENTS	PG 19-22

GLASS BALUSTRADE PANELS

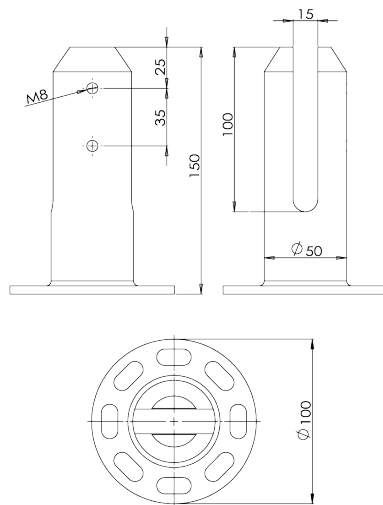
GLASS PANELS	PG 23-26
FACE FIXED GLASS PANELS	PG 27-30

GLASS POOL PANELS

INFILL PANELS	PG 31-35
HINGE PANELS	PG 36-37
GATE PANELS	PG 37

STAINLESS STEEL SPIGOTS

PISA SPIGOT



SPECIFICATIONS:

- 2205 Stainless Steel
- Resistant to weathering
- Base plate included
- Multiple fixing holes for positioning
- Gasket and pressure plate integrated
- Suitable for 12mm glass
- Friction fit, no holes in glass

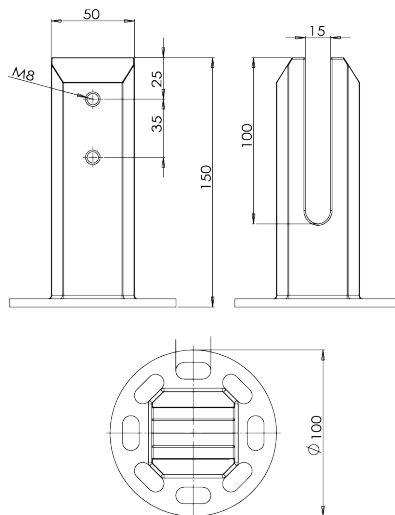
PRODUCT CODES:

POLISHED: GH-SF-RRF-P

MATERIAL:
2205 Stainless Steel

DIMENSIONS:
DØ50*50mm x H150mm x Flange 100mm

EMPIRE SPIGOT



SPECIFICATIONS:

- 2205 Stainless Steel
- Resistant to weathering
- Base plate included
- Multiple fixing holes for positioning
- Gasket and pressure plate integrated
- Suitable for 12mm glass
- Friction fit, no holes in glass

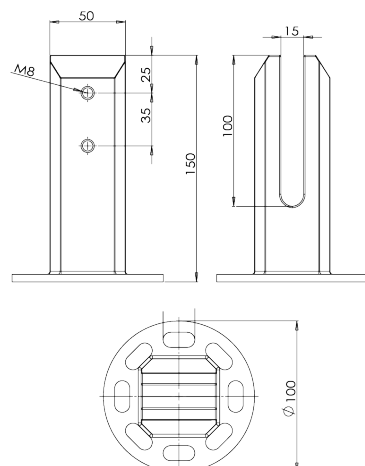
PRODUCT CODES:

POLISHED: GH-SF-RSF-P

MATERIAL:
2205 Stainless Steel

DIMENSIONS:
DØ50*50mm x H150mm x Flange 100mm

EMPIRE MATT BLACK SPIGOT



SPECIFICATIONS:

- 2205 Stainless Steel
- Electrostatic coating
- Resistant to weathering
- Base plate included
- Multiple fixing holes for positioning
- Gasket and pressure plate integrated
- Suitable for 12mm glass
- Friction fit, no holes in glass

PRODUCT CODES:

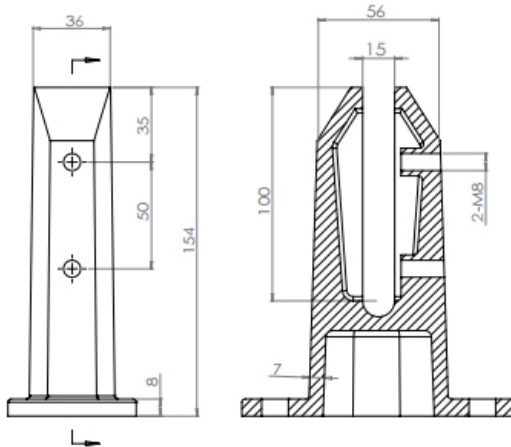
MATT BLACK: GH-SF-RSF-B

MATERIAL:
2205 Stainless Steel

DIMENSIONS:
DØ50*50mm x H150mm x Flange 100mm

STAINLESS STEEL SPIGOTS

EIFFEL POLISHED SPIGOT



SPECIFICATIONS:

- 2205 Stainless Steel
- Resistant to weathering
- Base plate included
- Multiple fixing holes for positioning
- Gasket and pressure plate integrated
- Suitable for 12mm glass
- Friction fit, no holes in glass

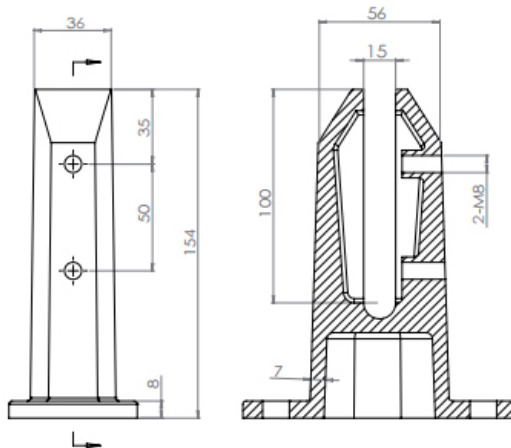
PRODUCT CODES:

POLISHED: GH-SF-RAD-P

MATERIAL:
2205 Stainless Steel

DIMENSIONS:
DØ36*56mm x H154mm x Flange 127*60mm

EIFFEL MATT BLACK SPIGOT



SPECIFICATIONS:

- 2205 Stainless Steel
- Electrostatic coating
- Resistant to weathering
- Base plate included
- Multiple fixing holes for positioning
- Gasket and pressure plate integrated
- Suitable for 12mm glass
- Friction fit, no holes in glass

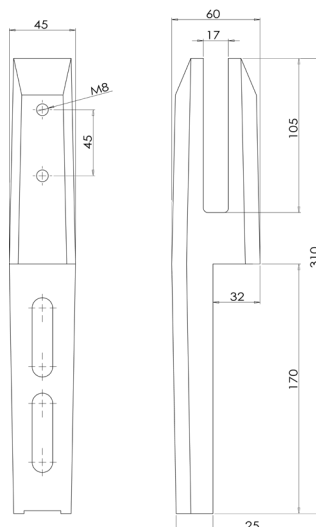
PRODUCT CODES:

MATT BLACK: GH-SF-RAD-B

MATERIAL:
2205 Stainless Steel

DIMENSIONS:
DØ36*56mm x H154mm x Flange 127*60mm

FACE FIXED POLISHED SPIGOT



SPECIFICATIONS:

- 2205 Stainless Steel
- Electrostatic coating
- Resistant to weathering
- Base plate included
- Multiple fixing holes for positioning
- Gasket and pressure plate integrated
- Suitable for 12mm glass
- Friction fit, no holes in glass

PRODUCT CODES:

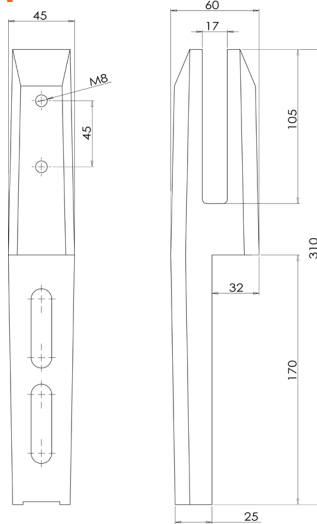
POLISHED: GHB-FF029-P

MATERIAL:
2205 Stainless Steel

DIMENSIONS:
H310 x W39 x D25mm

STAINLESS STEEL SPIGOTS

FACE FIXED MATT BLACK SPIGOT



MATERIAL:
2205 Stainless Steel

DIMENSIONS:
H310 x W39 x D25mm

SPECIFICATIONS:

- 2205 Stainless Steel
- Resistant to weathering
- Base plate included
- Multiple fixing holes for positioning
- Gasket and pressure plate integrated
- Suitable for 12mm glass
- Friction fit, no holes in glass

PRODUCT CODES:

MATT BLACK: GHB-FF029-B

OFFSET HANDRAIL SYSTEM

HANDRAIL

ASNZ1288-2006



SPECIFICATIONS:

- 316 Stainless Steel
- Resistant to weathering
- Manufactured to the highest standard for strength and durability
- Premium quality finish
- Available in polished or satin finish

PRODUCT CODES:

POLISHED: GHB-HNDRAIL2.9P

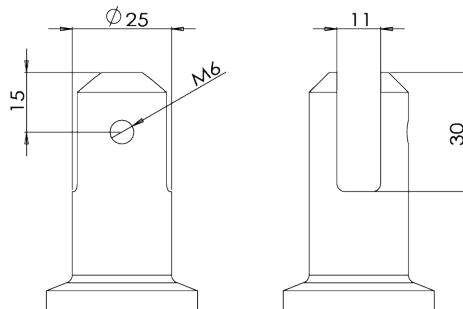
MATERIAL:

316 Stainless Steel

DIMENSIONS:

W50mm x H10mm x L2900mm

STAND OFF BRACKET



SPECIFICATIONS:

- 316 Stainless Steel
- Manufactured by investment casting
- Resistant to weathering
- Suitable for offset handrail
- Slimline rail configuration
- Manufactured to the highest standard for strength and durability

PRODUCT CODES:

POLISHED: GHB-STPIN-P

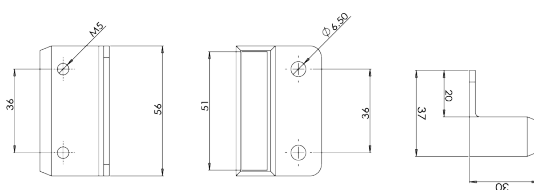
MATERIAL:

316 Stainless Steel

DIMENSIONS:

Outer Ø 38mm x Rail Slot Ø25mm x L75mm

WALL TIE



SPECIFICATIONS:

- 316 Stainless Steel
- Manufactured by investment casting
- Resistant to weathering
- Suitable for offset handrail
- No exposed tube cuts
- Manufactured to the highest standard for strength and durability

PRODUCT CODES:

POLISHED: GHB-HWALLT-P

MATERIAL:

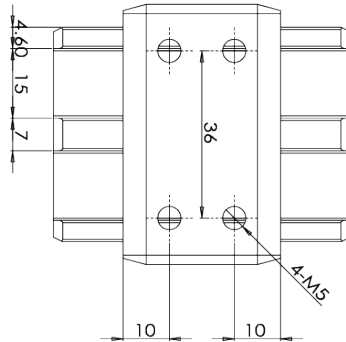
316 Stainless Steel

DIMENSIONS:

W56mm x H37mm x L30mm

OFFSET HANDRAIL SYSTEM

180° INLINE JOINER



MATERIAL:
316 Stainless Steel

DIMENSIONS:
W56mm x H16mm x L64mm

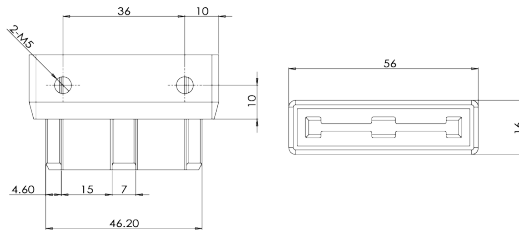
SPECIFICATIONS:

- 316 Stainless Steel
- Manufactured by investment casting
- Resistant to weathering
- Suitable for offset handrail
- No welding required

PRODUCT CODES:

POLISHED: GHB-HINLINE-P

END CAP



MATERIAL:
316 Stainless Steel

DIMENSIONS:
W56mm x H16mm x L34mm

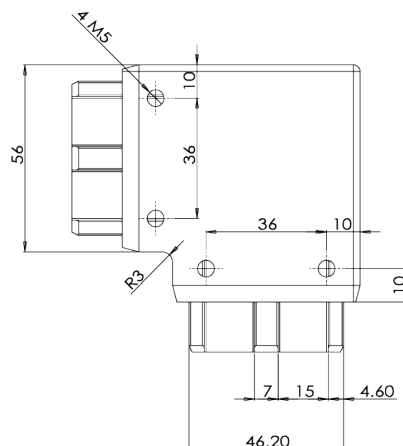
SPECIFICATIONS:

- 316 Stainless Steel
- Manufactured by investment casting
- Resistant to weathering
- Suitable for offset handrail
- No welding required
- No exposed tube cuts

PRODUCT CODES:

POLISHED: GHB-HENDC-P

90° JOINER



MATERIAL:
316 Stainless Steel

DIMENSIONS:
Rail slot 50*10mm x Thickness 16mm x L71mm

SPECIFICATIONS:

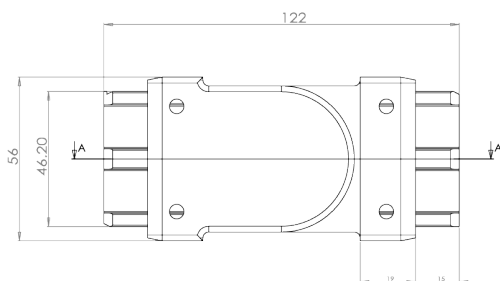
- 316 Stainless Steel
- Manufactured by investment casting
- Resistant to weathering
- Suitable for offset handrail
- No welding required
- No exposed tube cuts

PRODUCT CODES:

POLISHED: GHB-HCNRJOIN-P

OFFSET HANDRAIL SYSTEM

ADJUSTABLE CORNER JOINER



SPECIFICATIONS:

- 316 Stainless Steel
- Manufactured by investment casting
- Resistant to weathering
- Suitable for offset handrail
- No welding required

PRODUCT CODES:

POLISHED: GHB-HCNRADJ-P

MATERIAL:

316 Stainless Steel

DIMENSIONS:

W56mm x H16mm x L122mm

TOP MOUNT HANDRAIL SYSTEM

HANDRAIL



MATERIAL:
316 Stainless Steel

DIMENSIONS:
(Slot 14*14mm) W25mm x H21mm x L2.9m

SPECIFICATIONS:

- 316 Stainless Steel
- Resistant to weathering
- Manufactured to the highest standard for strength and durability
- Premium quality finish
- Available in polished or satin finish

PRODUCT CODES:

POLISHED: GHB-RIL-SQ2.9-P

SATIN: GHB-RIL-SQ2.9-S

HANDRAIL - MATT BLACK



MATERIAL:
316 Stainless Steel

DIMENSIONS:
(Slot 14*14mm) W25mm x H21mm x L2.9m

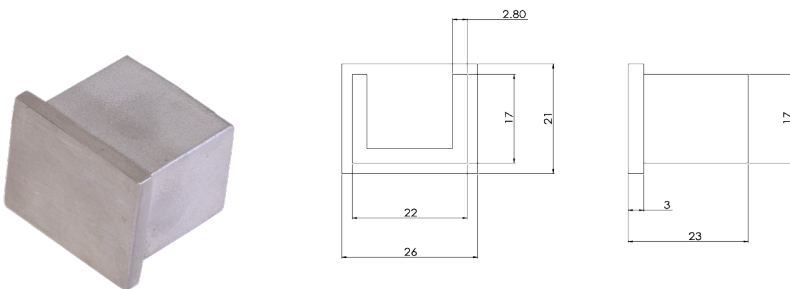
SPECIFICATIONS:

- 316 Stainless Steel
- Electrostatic coating
- Resistant to weathering
- Manufactured to the highest standard for strength and durability
- Premium quality finish

PRODUCT CODES:

MATT BLACK: GHB-RIL-SQ2.9-B

END CAP



316 Stainless Steel

DIMENSIONS:
W26mm x H23mm

SPECIFICATIONS:

- 316 Stainless Steel
- Manufactured by investment casting
- Resistant to weathering
- Suitable for top cap handrail
- No welding required
- No exposed tube cuts
- Available in polished or satin finish

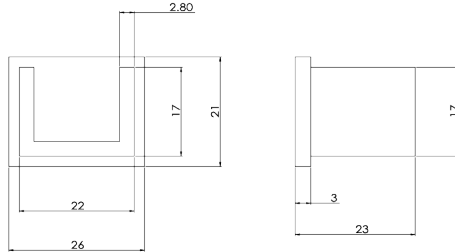
PRODUCT CODES:

POLISHED: GHB-25SEDCP-P

SATIN: GHB-25SEDCP-S

TOP MOUNT HANDRAIL SYSTEM

END CAP - MATT BLACK



SPECIFICATIONS:

- 316 Stainless Steel
- Manufactured by investment casting
- Electrostatic coating
- Resistant to weathering
- Suitable for top cap handrail
- No welding required
- No exposed tube cuts

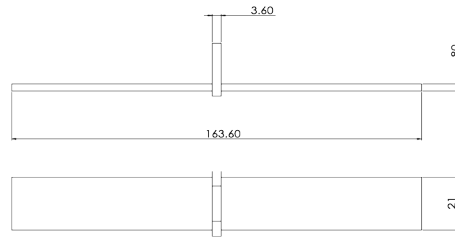
PRODUCT CODES:

MATT BLACK: GHB-25SEPCP-B

MATERIAL:
316 Stainless Steel

DIMENSIONS:
W26mm x H23mm

180° INLINE JOINER



SPECIFICATIONS:

- 316 Stainless Steel
- Manufactured by investment casting
- Suitable for top cap handrail
- No welding required
- No exposed tube cuts
- Available in polished or satin finish

PRODUCT CODES:

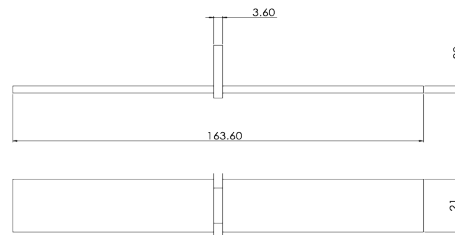
POLISHED: GHB-25SJNR-P

SATIN: GHB-25SJNR-S

MATERIAL:
316 Stainless Steel

DIMENSIONS:
(Thickness 2.8mm) W21mm x L163.6mm

INLINE JOINER - MATT BLACK



SPECIFICATIONS:

- 316 Stainless Steel
- Manufactured by investment casting
- Electrostatic coating
- Suitable for top cap handrail
- No welding required
- No exposed tube cuts

PRODUCT CODES:

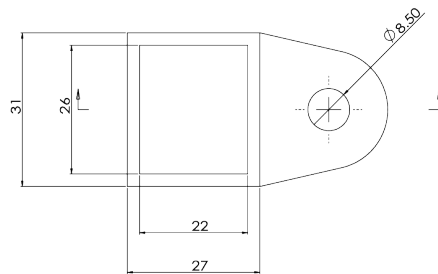
POLISHED: GHB-25SJNR-B

MATERIAL:
316 Stainless Steel

DIMENSIONS:
(Thickness 2.8mm) W21mm x L163.6mm

TOP MOUNT HANDRAIL SYSTEM

WALL TIE



MATERIAL:

316 Stainless Steel

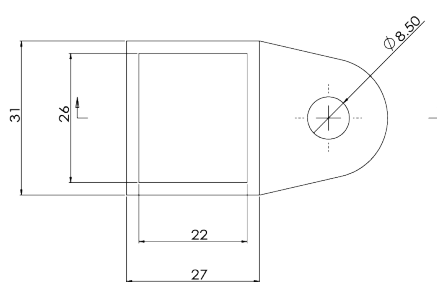
SPECIFICATIONS:

- 316 Stainless Steel
- Manufactured by investment casting
- Resistant to weathering
- Suitable for top cap handrail
- No welding required
- No exposed tube cuts
- Available in polished or satin finish

PRODUCT CODES:

POLISHED: GHB-25SWALL-P**SATIN:** GHB-25SWALL-S

WALL TIE - MATT BLACK



MATERIAL:

316 Stainless Steel

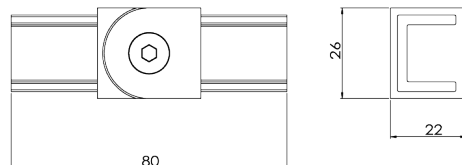
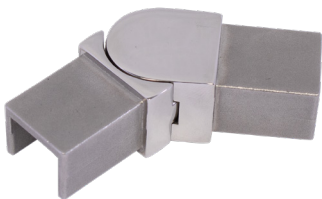
SPECIFICATIONS:

- 316 Stainless Steel
- Manufactured by investment casting
- Electrostatic coating
- Resistant to weathering
- Suitable for top cap handrail
- No welding required
- No exposed tube cuts

PRODUCT CODES:

MATT BLACK: GHB-25SWALL-B

135° ADJUSTABLE CORNER JOINER



MATERIAL:

316 Stainless Steel

DIMENSIONS:

W26mm x H22mm x L80mm

SPECIFICATIONS:

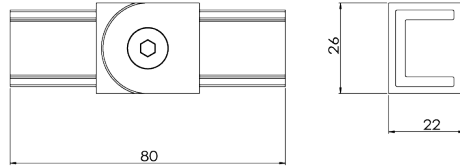
- 316 Stainless Steel
- Manufactured by investment casting
- Resistant to weathering
- Suitable for top cap handrail
- Maximum 135° angle
- No welding required
- No exposed tube cuts

PRODUCT CODES:

POLISHED: GHB-25SCNRADJ-P

TOP MOUNT HANDRAIL SYSTEM

135° ADJUSTABLE CORNER JOINER - MATT BLACK



SPECIFICATIONS:

- 316 Stainless Steel
- Manufactured by investment casting
- Electrostatic coating
- Resistant to weathering
- Suitable for top cap handrail
- Maximum 135° angle
- No welding required
- No exposed tube cuts

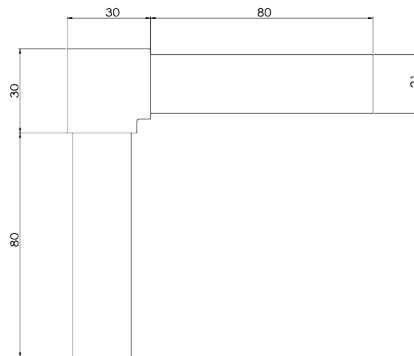
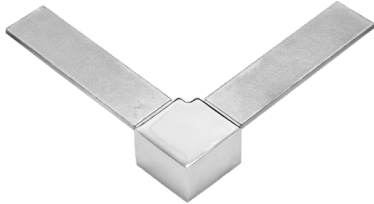
PRODUCT CODES:

MATT BLACK: GHB-25SCNRADJ-B

MATERIAL:
316 Stainless Steel

DIMENSIONS:
W26mm x H22mm x L80mm

90° CORNER JOINER



SPECIFICATIONS:

- 316 Stainless Steel
- Manufactured by investment casting
- Resistant to weathering
- Suitable for top cap handrail
- No welding required
- No exposed tube cuts
- Available in polished or satin finish

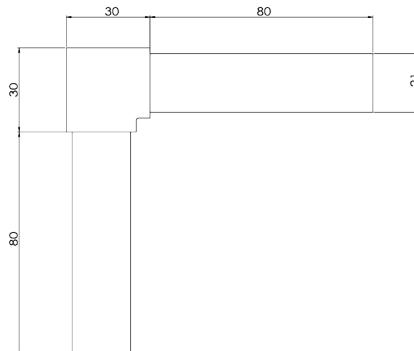
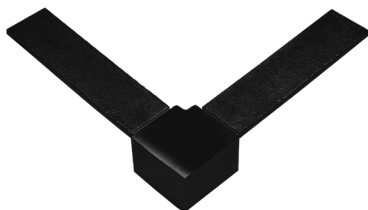
PRODUCT CODES:

POLISHED: GHB-25S90C-P
SATIN: GHB-25S90C-S

MATERIAL:
316 Stainless Steel

DIMENSIONS:
W21mm x L110*110mm

90° CORNER JOINER - MATT BLACK



SPECIFICATIONS:

- 316 Stainless Steel
- Manufactured by investment casting
- Electrostatic coating
- Resistant to weathering
- Suitable for top cap handrail
- No welding required
- No exposed tube cuts

PRODUCT CODES:

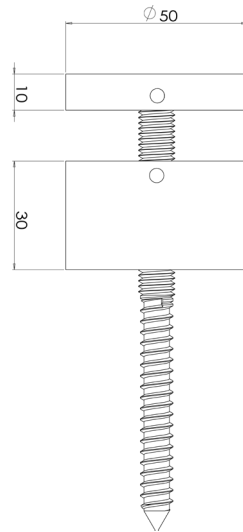
POLISHED: GHB-25S90C-B

MATERIAL:
316 Stainless Steel

DIMENSIONS:
W21mm x L110*110mm

FACE FIX ACCESSORIES

STANDOFF PIN



SPECIFICATIONS:

- 316 Stainless Steel
- Resistant to weathering
- M10 thread or 2x outer fixing holes
- Brushes & washes included

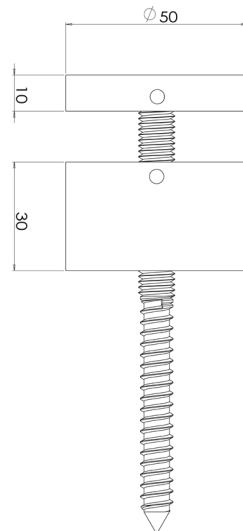
PRODUCT CODES:

POLISHED: GHB-FACEFIXPINP

MATERIAL:
316 Stainless Steel

DIMENSIONS:
Outer Ø 50mm x Body 30mm

STANDOFF PIN - MATT BLACK



SPECIFICATIONS:

- 316 Stainless Steel
- Electrostatic coating
- Resistant to weathering
- M10 thread or 2x outer fixing holes
- Brushes & washes included

PRODUCT CODES:

MATT BLACK: GHB-FACEFIXB

MATERIAL:
316 Stainless Steel

DIMENSIONS:
Outer Ø 50mm x Body 30mm

STANDOFF PIN SPANNER



SPECIFICATIONS:

- 316 Stainless Steel
- Suitable for 50mm pin installation
- Necessary when installing face fix pins

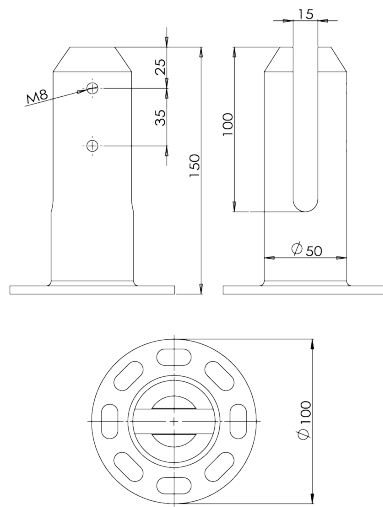
PRODUCT CODES:

GHB-SPANNER

MATERIAL:
316 Stainless Steel

STAINLESS STEEL SPIGOTS

PISA SPIGOT



MATERIAL:
2205 Stainless Steel

DIMENSIONS:
DØ50*50mm x H150mm x Flange 100mm

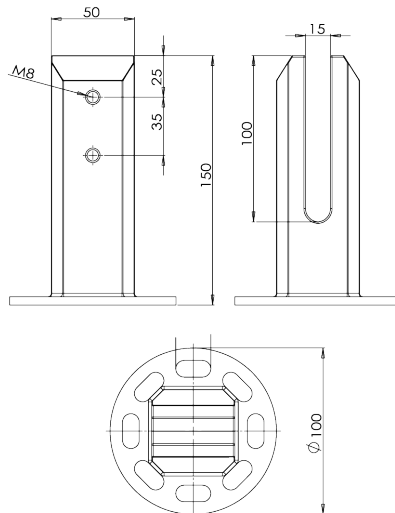
SPECIFICATIONS:

- 2205 Stainless Steel
- Resistant to weathering
- Base plate included
- Multiple fixing holes for positioning
- Gasket and pressure plate integrated
- Suitable for 12mm glass
- Friction fit, no holes in glass

PRODUCT CODES:

POLISHED: GH-SF-RRF-P
SATIN: GH-SF-RRF-S

EMPIRE SPIGOT



MATERIAL:
2205 Stainless Steel

DIMENSIONS:
DØ50*50mm x H150mm x Flange 100mm

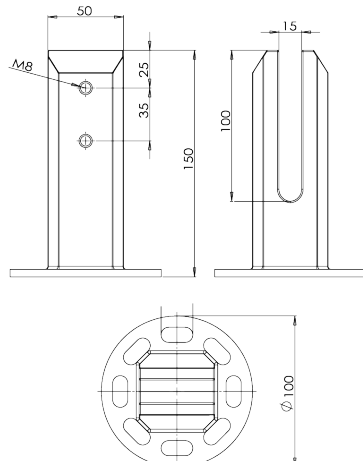
SPECIFICATIONS:

- 2205 Stainless Steel
- Resistant to weathering
- Base plate included
- Multiple fixing holes for positioning
- Gasket and pressure plate integrated
- Suitable for 12mm glass
- Friction fit, no holes in glass

PRODUCT CODES:

POLISHED: GH-SF-RSF-P
SATIN: GH-SF-RSF-S

EMPIRE MATT BLACK SPIGOT



MATERIAL:
2205 Stainless Steel

DIMENSIONS:
DØ50*50mm x H150mm x Flange 100mm

SPECIFICATIONS:

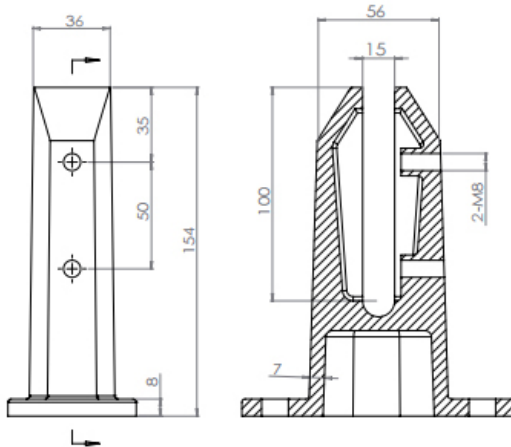
- 2205 Stainless Steel
- Electrostatic coating
- Resistant to weathering
- Base plate included
- Multiple fixing holes for positioning
- Gasket and pressure plate integrated
- Suitable for 12mm glass
- Friction fit, no holes in glass

PRODUCT CODES:

MATT BLACK: GH-SF-RSF-B

STAINLESS STEEL SPIGOTS

EIFFEL POLISHED SPIGOT



SPECIFICATIONS:

- 2205 Stainless Steel
- Resistant to weathering
- Base plate included
- Multiple fixing holes for positioning
- Gasket and pressure plate integrated
- Suitable for 12mm glass
- Friction fit, no holes in glass

PRODUCT CODES:

POLISHED: GH-SF-RAD-P

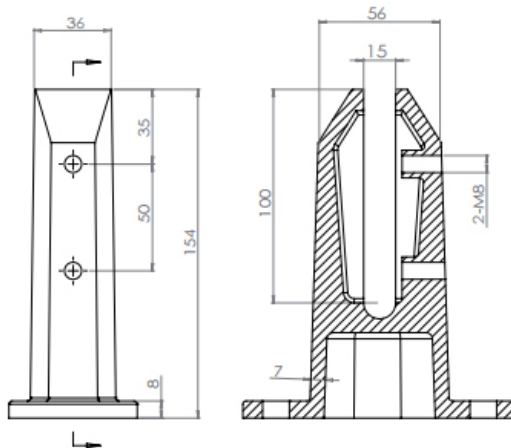
MATERIAL:

2205 Stainless Steel

DIMENSIONS:

DØ36*56mm x H154mm x Flange 127*60mm

EIFFEL MATT BLACK SPIGOT



SPECIFICATIONS:

- 2205 Stainless Steel
- Electrostatic coating
- Resistant to weathering
- Base plate included
- Multiple fixing holes for positioning
- Gasket and pressure plate integrated
- Suitable for 12mm glass
- Friction fit, no holes in glass

PRODUCT CODES:

MATT BLACK: GH-SF-RAD-B

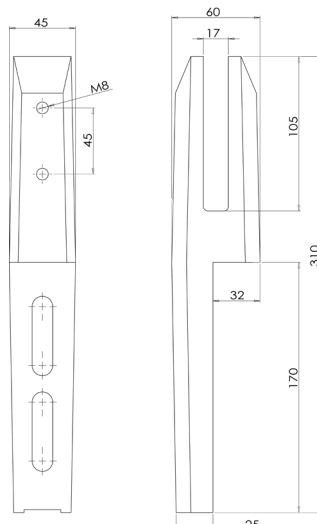
MATERIAL:

2205 Stainless Steel

DIMENSIONS:

DØ36*56mm x H154mm x Flange 127*60mm

FACE FIXED POLISHED SPIGOT



SPECIFICATIONS:

- 2205 Stainless Steel
- Electrostatic coating
- Resistant to weathering
- Base plate included
- Multiple fixing holes for positioning
- Gasket and pressure plate integrated
- Suitable for 12mm glass
- Friction fit, no holes in glass

PRODUCT CODES:

POLISHED: GHB-FF029-P

MATERIAL:

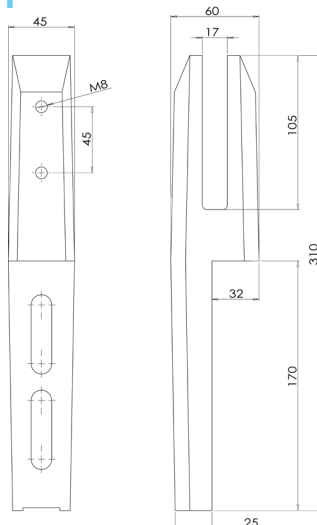
2205 Stainless Steel

DIMENSIONS:

H310 x W39 x D25mm

STAINLESS STEEL SPIGOTS

FACE FIXED MATT BLACK SPIGOT



MATERIAL:
2205 Stainless Steel

DIMENSIONS:
H310 x W39 x D25mm

SPECIFICATIONS:

- 2205 Stainless Steel
- Resistant to weathering
- Base plate included
- Multiple fixing holes for positioning
- Gasket and pressure plate integrated
- Suitable for 12mm glass
- Friction fit, no holes in glass

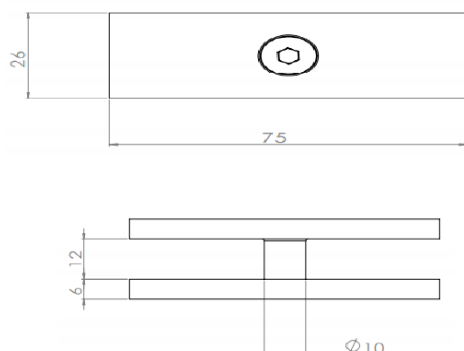
PRODUCT CODES:

MATT BLACK: GHB-FF029-B

GLASS CONNECTORS (OPTIONAL)

*20MM SPACING REQUIRED

INLINE JOINER



MATERIAL:

316 Stainless Steel

DIMENSIONS:

W29mm x H54mm x L60mm

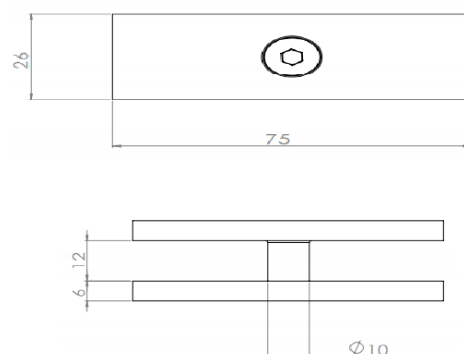
SPECIFICATIONS:

- 316 Stainless Steel
- Manufactured by investment casting
- Superior corrosion resistance
- Suitable for 12mm glass
- Friction fit, no holes in glass
- Available in polished or satin finish

PRODUCT CODES:

POLISHED: GH-GC-INLINE-P**SATIN:** GH-GC-INLINE-S

INLINE JOINER - MATT BLACK



MATERIAL:

316 Stainless Steel

DIMENSIONS:

W72mm x H26mm x L72mm

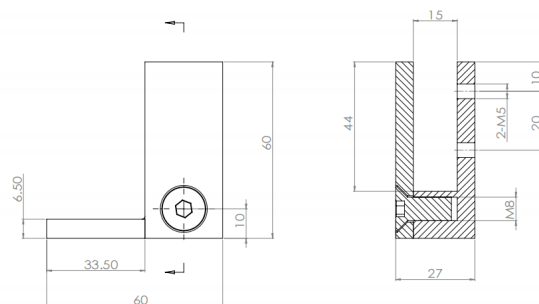
SPECIFICATIONS:

- 316 Stainless Steel
- Electrostatic coating
- Manufactured by investment casting
- Superior corrosion resistance
- Suitable for 12mm glass
- Friction fit, no holes in glass

PRODUCT CODES:

MATT BLACK: GH-GC-INLINE-B

END BRACKET



MATERIAL:

316 Stainless Steel

DIMENSIONS:

W27mm x H60mm x L60mm

SPECIFICATIONS:

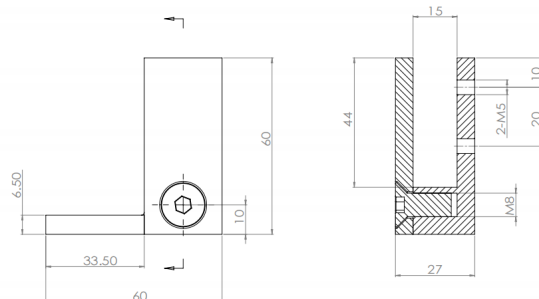
- 316 Stainless Steel
- Manufactured by investment casting
- Superior corrosion resistance
- Suitable for 12mm glass
- Friction fit, no holes in glass
- Available in polished or satin finish

PRODUCT CODES:

POLISHED: GH-GC-ENDBRACK-P**SATIN:** GH-GC-ENDBRACK-S

GLASS CONNECTORS (OPTIONAL)

END BRACKET - MATT BLACK



SPECIFICATIONS:

- 316 Stainless Steel
- Electrostatic coating
- Manufactured by investment casting
- Superior corrosion resistance
- Suitable for 12mm glass
- Friction fit, no holes in glass

PRODUCT CODES:

MATT BLACK: GH-GC-ENDBRCK-B

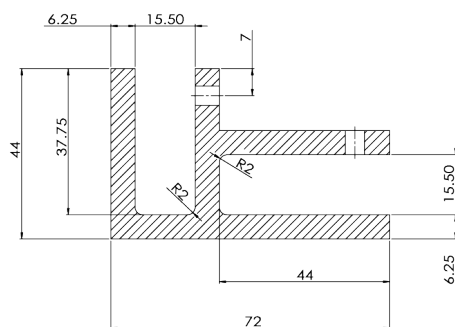
MATERIAL:

316 Stainless Steel

DIMENSIONS:

W27mm x H60mm x L60mm

CORNER JOINER



SPECIFICATIONS:

- 316 Stainless Steel
- Manufactured by investment casting
- Superior corrosion resistance
- Suitable for 12mm glass
- Friction fit, no holes in glass
- Available in polished or satin finish

PRODUCT CODES:

POLISHED: GH-GC90-CORNER-P

SATIN: GH-GC90-CORNER-S

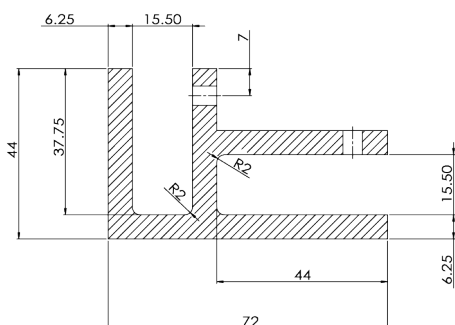
MATERIAL:

316 Stainless Steel

DIMENSIONS:

W72mm x H26mm x L72mm

CORNER JOINER - MATT BLACK



SPECIFICATIONS:

- 316 Stainless Steel
- Electrostatic coating
- Manufactured by investment casting
- Superior corrosion resistance
- Base plate included
- Suitable for 12mm glass
- Friction fit, no holes in glass

PRODUCT CODES:

MATT BLACK: GH-GC90CRNR-B

MATERIAL:

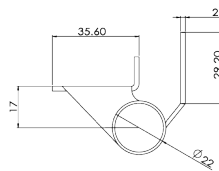
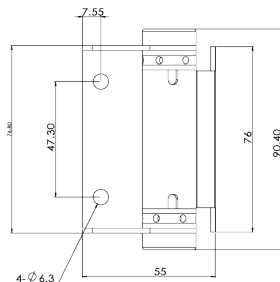
316 Stainless Steel

DIMENSIONS:

W27mm x H60mm x L60mm

GLASS GATE COMPONENTS

2 PACK GATE HINGE



SPECIFICATIONS:

- 316 Stainless Steel
- Resistant to weathering
- Suitable for 8-12mm glass gates
- 8-12mm glass screw sets included
- Available in polished or satin finish

PRODUCT CODES:

POLISHED: GH-HINGE-G2G-P

SATIN: GH-HINGE-G2G-S

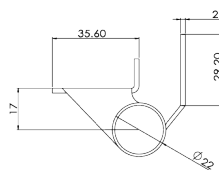
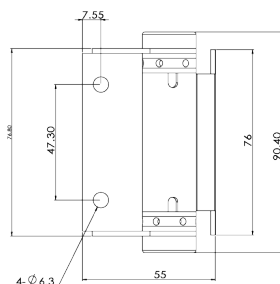
MATERIAL:

316 Stainless Steel

DIMENSIONS:

Hole Centres 47mm x Shaft Ø 22mm x Glass Plates 76mm

2 PACK GATE HINGE - MATT BLACK



SPECIFICATIONS:

- 316 Stainless Steel
- Electrostatic coating
- Resistant to weathering
- Suitable for 8-12mm glass gates
- 8-12mm glass screw sets included

PRODUCT CODES:

MATT BLACK: GH-HINGE-G2G-B

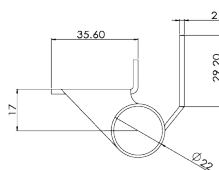
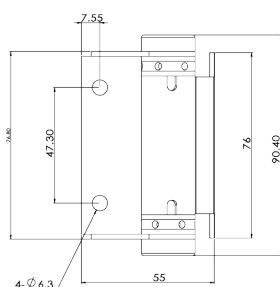
MATERIAL:

316 Stainless Steel

DIMENSIONS:

Hole Centres 47mm x Shaft Ø 22mm x Glass Plates 76mm

2 PACK WALL/POST TO GLASS



SPECIFICATIONS:

- 316 Stainless Steel
- Resistant to weathering
- Suitable for 8-12mm glass gates
- 8-12mm glass screw sets included
- Available in polished or satin finish

PRODUCT CODES:

POLISHED: GHB-HINGE-SQ-P

SATIN: GHB-HINGE-SQ-S

MATERIAL:

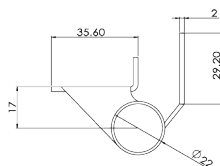
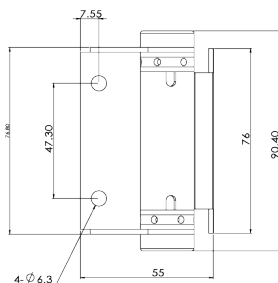
316 Stainless Steel

DIMENSIONS:

Hole Centres 47mm x Shaft Ø 22mm x Glass Plates 76mm

GLASS GATE COMPONENTS

2 PACK WALL/POST TO GLASS HINGE - MATT BLACK



SPECIFICATIONS:

- 316 Stainless Steel
- Electrostatic coating
- Resistant to weathering
- Suitable for 8-12mm glass gates
- 8-12mm glass screw sets included

PRODUCT CODES:

MATT BLACK: GHB-HINGE-SQ-B

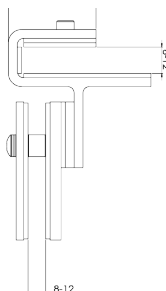
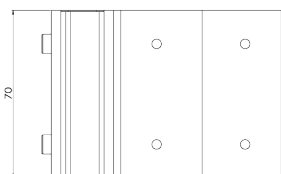
MATERIAL:

316 Stainless Steel

DIMENSIONS:

Hole Centres 47mm x Shaft Ø 22mm x Glass Plates 76mm

GATE OUTSWING LATCH



SPECIFICATIONS:

- 316 Stainless Steel W/ Polymer Plastic
- Resistant to weathering
- Suitable for 8, 10 & 12mm glass gates
- 8-12mm glass screw sets included
- Complies with NZ pool safety regulations
- Available in polished or satin finish

PRODUCT CODES:

POLISHED: GHB-LATCHCNR-P

SATIN: GHB-LATCHCNR-S

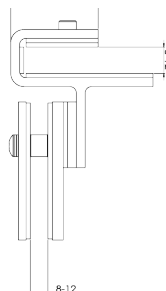
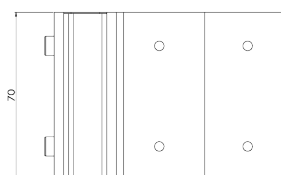
MATERIAL:

316 Stainless Steel

DIMENSIONS:

Gate plates 64*75mm ; Latch plates 40*75mm

GATE OUTSWING LATCH - MATT BLACK



SPECIFICATIONS:

- 316 Stainless Steel W/ Polymer Plastic
- Electrostatic coating
- Resistant to weathering
- Suitable for 8, 10 & 12mm glass gates
- 8-12mm glass screw sets included
- Complies with NZ pool safety regulations

PRODUCT CODES:

MATT BLACK: GHB-LATCHCNR-B

MATERIAL:

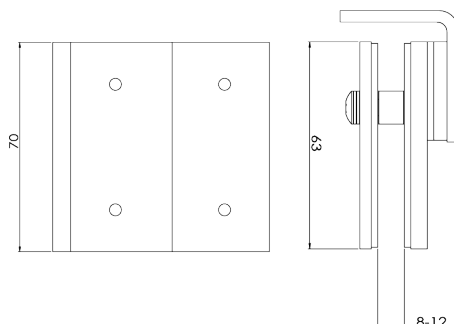
316 Stainless Steel

DIMENSIONS:

Gate plates 64*75mm ; Latch plates 40*75mm

GLASS GATE COMPONENTS

GATE LATCH WALL/POST MOUNT



SPECIFICATIONS:

- 316 Stainless Steel W/ Polymer Plastic
- Resistant to weathering
- Suitable for 8, 10 & 12mm glass gates
- 8-12mm glass screw sets included
- Complies with NZ pool safety regulations
- Available in polished or satin finish

PRODUCT CODES:

POLISHED: GHB-WPLATCH-P

SATIN: GHB-WPLATCH-S

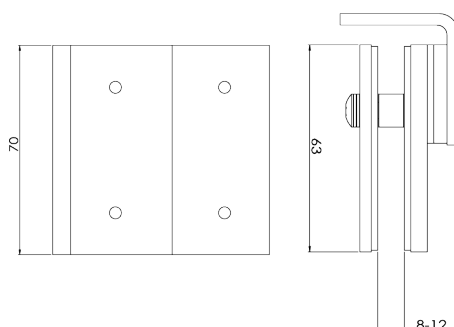
MATERIAL:

316 Stainless Steel

DIMENSIONS:

Gate plates 64*75mm ; Latch plates 40*75mm

GATE LATCH WALL/POST - MATT BLACK



SPECIFICATIONS:

- 316 Stainless Steel W/ Polymer Plastic
- Electrostatic coating
- Resistant to weathering
- Suitable for 8, 10 & 12mm glass gates
- 8-12mm glass screw sets included
- Complies with NZ pool safety regulations

PRODUCT CODES:

MATT BLACK: GHB-WPLATCH-B

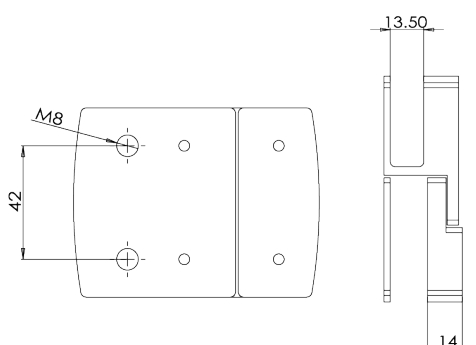
MATERIAL:

316 Stainless Steel

DIMENSIONS:

Gate plates 64*75mm ; Latch plates 40*75mm

INLINE 180° GATE LATCH PACK



SPECIFICATIONS:

- 316 Stainless Steel W/ Polymer Plastic
- Manufactured by investment casting
- Resistant to weathering
- Suitable for 8, 10 & 12mm glass gates
- 8-12mm glass screw sets included
- Complies with NZ pool safety regulations

PRODUCT CODES:

POLISHED: GH-LATCH180-P

SATIN: GH-LATCH180-S

MATERIAL:

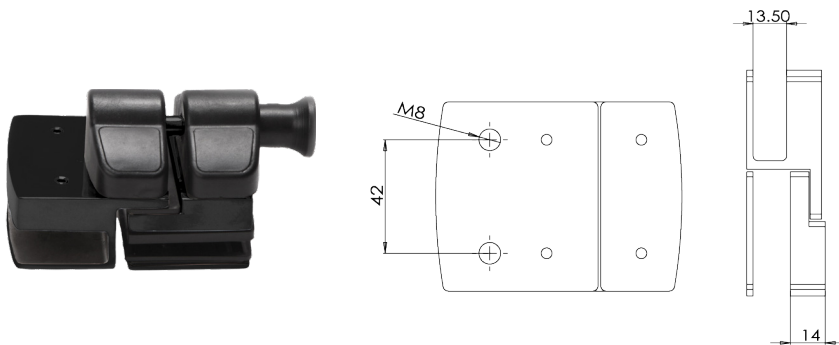
316 Stainless Steel

DIMENSIONS:

Gate plates 64 *75mm ; Latch plates 40*75mm

GLASS GATE COMPONENTS

INLINE 180° GATE LATCH PACK - MATT BLACK



SPECIFICATIONS:

- 316 Stainless Steel W/ Polymer Plastic
- Manufactured by investment casting
- Electrostatic coating
- Resistant to weathering
- Suitable for 8, 10 & 12mm glass gates
- 8-12mm glass screw sets included
- Complies with NZ pool safety regulations

PRODUCT CODES:

MATT BLACK: GH-LATCH180-B

MATERIAL:

316 Stainless Steel

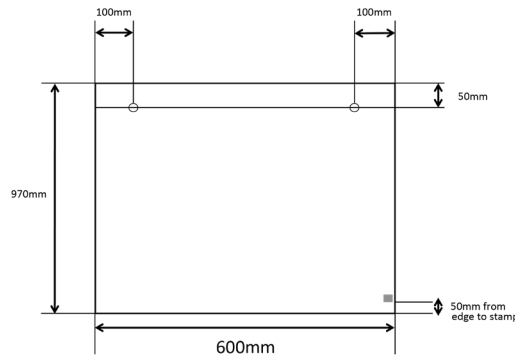
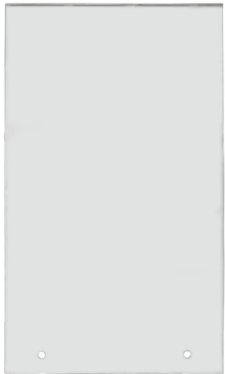
DIMENSIONS:

Gate plates 64*75mm ; Latch plates 40*75mm

GLASS PANELS

***INCLUDES PRE-DRILLED HOLES**

600MM GLASS BALUSTRADE PANEL



SPECIFICATIONS:

- 12mm clear toughened glass
- Heat soaked to EN 14179
- 3mm radius corners
- 14mm holes
- Handrail required (AS/NZS 11170), choose between Offset or Top Mount handrail.
- AS/NZS 2208 stamp with license No.

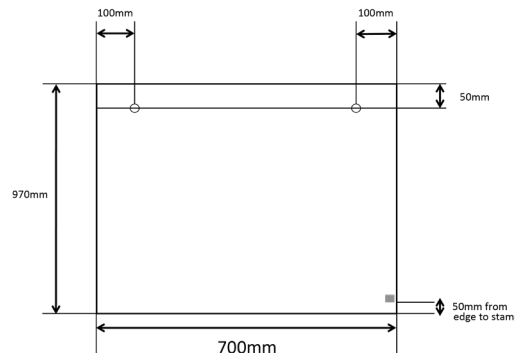
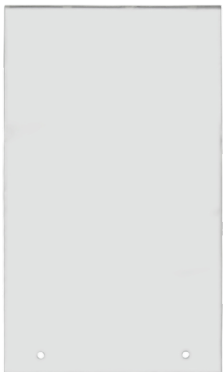
PRODUCT CODES:

GLASS PANEL: GF-BPANEL-600

MATERIAL:
Toughened Safety Glass

DIMENSIONS:
L600mm x H970mm x W12mm

700MM GLASS BALUSTRADE PANEL



SPECIFICATIONS:

- 12mm clear toughened glass
- Heat soaked to EN 14179
- 3mm radius corners
- 14mm holes
- Handrail required (AS/NZS 11170), choose between Offset or Top Mount handrail.
- AS/NZS 2208 stamp with license No.

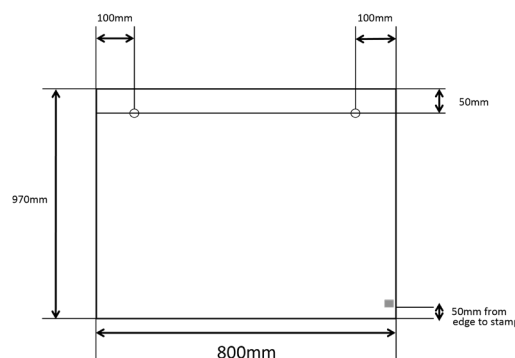
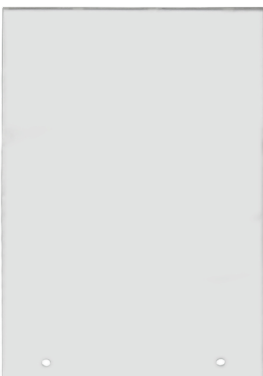
PRODUCT CODES:

GLASS PANEL: GF-BPANEL-700

MATERIAL:
Toughened Safety Glass

DIMENSIONS:
L700mm x H970mm x W12mm

800MM GLASS BALUSTRADE PANEL



SPECIFICATIONS:

- 12mm clear toughened glass
- Heat soaked to EN 14179
- 3mm radius corners
- 14mm holes
- Handrail required (AS/NZS 11170), choose between Offset or Top Mount handrail.
- AS/NZS 2208 stamp with license No.

PRODUCT CODES:

GLASS PANEL: GF-BPANEL-800

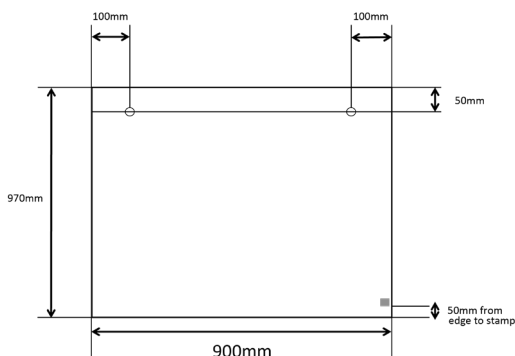
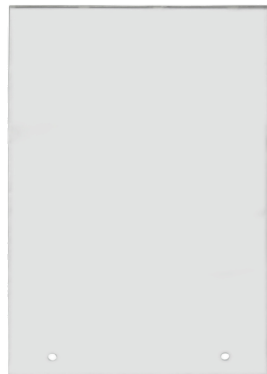
MATERIAL:
Toughened Safety Glass

DIMENSIONS:
L800mm x H970mm x W12mm

GLASS PANELS

*INCLUDES PRE-DRILLED HOLES

900MM GLASS BALUSTRADE PANEL



SPECIFICATIONS:

- 12mm clear toughened glass
- Heat soaked to EN 14179
- 3mm radius corners
- 14mm holes
- Handrail required (AS/NZS 11170), choose between Offset or Top Mount handrail.
- AS/NZS 2208 stamp with license No.

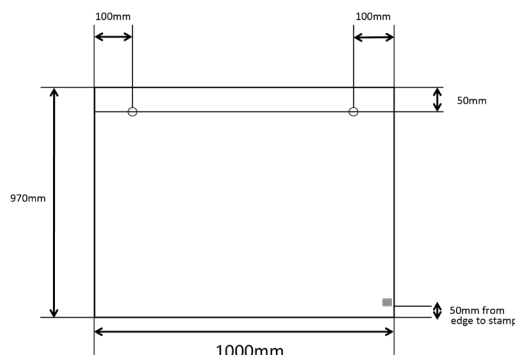
PRODUCT CODES:

GLASS PANEL: GF-BPANEL-900

MATERIAL:
Toughened Safety Glass

DIMENSIONS:
L900mm x H970mm x W12mm

1000MM GLASS BALUSTRADE PANEL



SPECIFICATIONS:

- 12mm clear toughened glass
- Heat soaked to EN 14179
- 3mm radius corners
- 14mm holes
- Handrail required (AS/NZS 11170), choose between Offset or Top Mount handrail.
- AS/NZS 2208 stamp with license No.

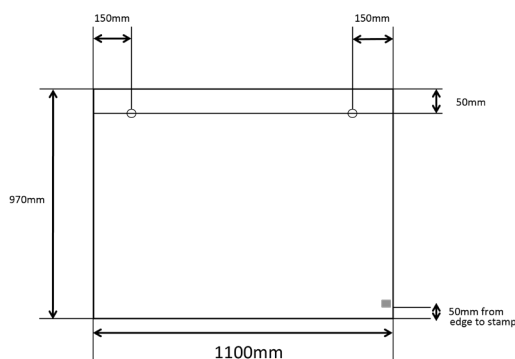
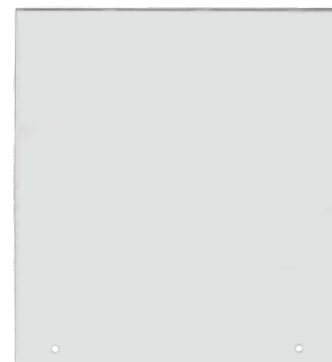
PRODUCT CODES:

GLASS PANEL: GF-BPANEL-1000

MATERIAL:
Toughened Safety Glass

DIMENSIONS:
L1000mm x H970mm x W12mm

1100MM GLASS BALUSTRADE PANEL



SPECIFICATIONS:

- 12mm clear toughened glass
- Heat soaked to EN 14179
- 3mm radius corners
- 14mm holes
- Handrail required (AS/NZS 11170), choose between Offset or Top Mount handrail.
- AS/NZS 2208 stamp with license No.

PRODUCT CODES:

GLASS PANEL: GF-BPANEL-1100

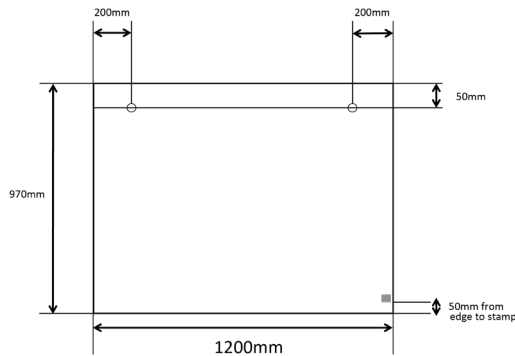
MATERIAL:
Toughened Safety Glass

DIMENSIONS:
L1100mm x H970mm x W12mm

GLASS PANELS

***INCLUDES PRE-DRILLED HOLES**

1200MM GLASS BALUSTRADE PANEL



SPECIFICATIONS:

- 12mm clear toughened glass
- Heat soaked to EN 14179
- 3mm radius corners
- 14mm holes
- Handrail required (AS/NZS 11170), choose between Offset or Top Mount handrail.
- AS/NZS 2208 stamp with license No.

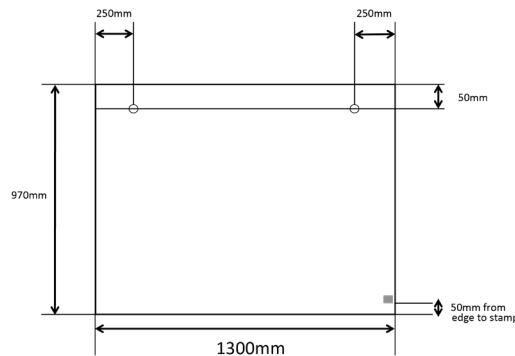
PRODUCT CODES:

GLASS PANEL: GF-BPANEL-1200

MATERIAL:
Toughened Safety Glass

DIMENSIONS:
L1200mm x H970mm x W12mm

1300MM GLASS BALUSTRADE PANEL



SPECIFICATIONS:

- 12mm clear toughened glass
- Heat soaked to EN 14179
- 3mm radius corners
- 14mm holes
- Handrail required (AS/NZS 11170), choose between Offset or Top Mount handrail.
- AS/NZS 2208 stamp with license No.

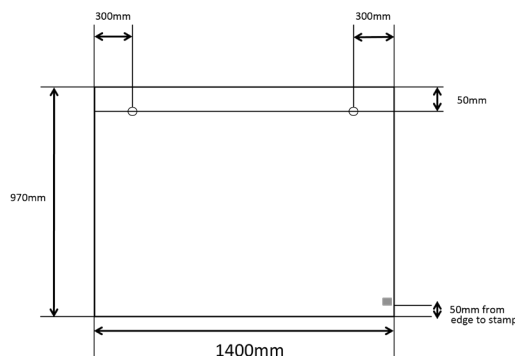
PRODUCT CODES:

GLASS PANEL: GF-BPANEL-1300

MATERIAL:
Toughened Safety Glass

DIMENSIONS:
L1300mm x H970mm x W12mm

1400MM GLASS BALUSTRADE PANEL



SPECIFICATIONS:

- 12mm clear toughened glass
- Heat soaked to EN 14179
- 3mm radius corners
- 14mm holes
- Handrail required (AS/NZS 11170), choose between Offset or Top Mount handrail.
- AS/NZS 2208 stamp with license No.

PRODUCT CODES:

GLASS PANEL: GF-BPANEL-1400

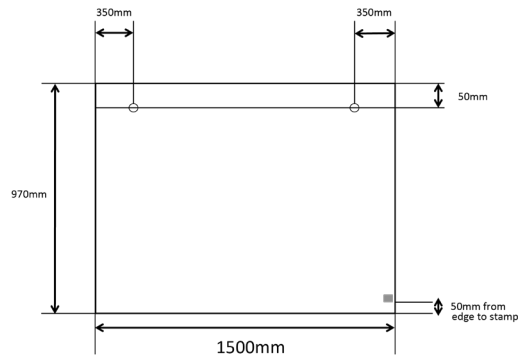
MATERIAL:
Toughened Safety Glass

DIMENSIONS:
L1400mm x H970mm x W12mm

GLASS PANELS

***INCLUDES PRE-DRILLED HOLES**

1500MM GLASS BALUSTRADE PANEL



SPECIFICATIONS:

- 12mm clear toughened glass
- Heat soaked to EN 14179
- 3mm radius corners
- 14mm holes
- Handrail required (AS/NZS 11170), choose between Offset or Top Mount handrail.
- AS/NZS 2208 stamp with license No.

PRODUCT CODES:

GLASS PANEL: GF-BPANEL-1500

MATERIAL:

Toughened Safety Glass

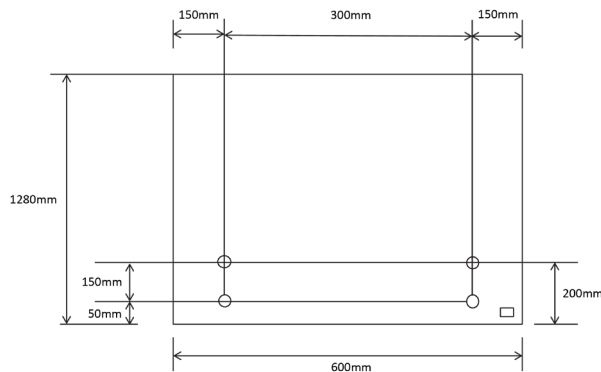
DIMENSIONS:

L1500mm x H970mm x W12mm

GLASS PANELS FACE FIXED

***INCLUDES PRE-DRILLED HOLES**

600MM GLASS BALUSTRADE PANEL - FACE FIXED



SPECIFICATIONS:

- 12mm clear toughened glass
- Heat soaked to EN 14179
- 3mm radius corners
- 20mm holes
- Compatible w/ Top-mount Handrail only
- AS/NZS 2208 stamp with license No.

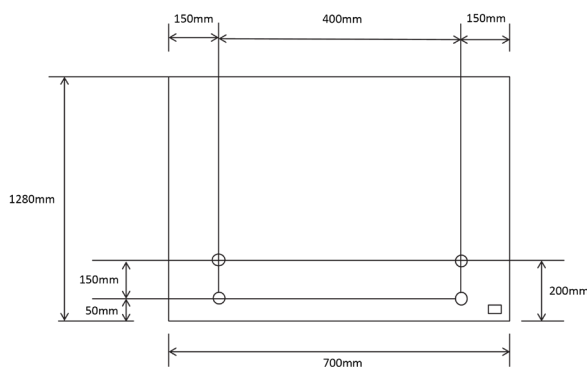
PRODUCT CODES:

GLASS PANEL: GF-FFPANEL-600

MATERIAL:
Toughened Safety Glass

DIMENSIONS:
L600mm x H1280mm x W12mm

700MM GLASS BALUSTRADE PANEL - FACE FIXED



SPECIFICATIONS:

- 12mm clear toughened glass
- Heat soaked to EN 14179
- 3mm radius corners
- 20mm holes
- Compatible w/ Top-mount Handrail only
- AS/NZS 2208 stamp with license No.

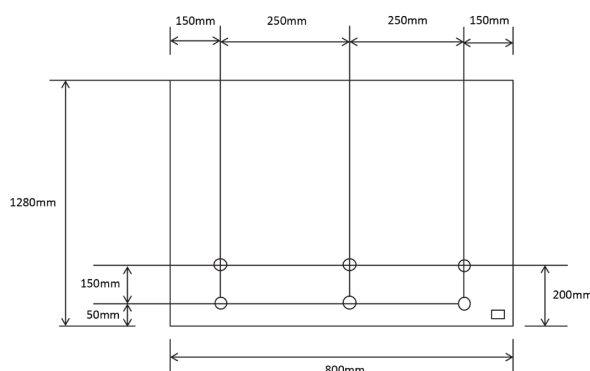
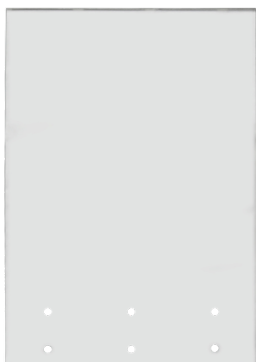
PRODUCT CODES:

GLASS PANEL: GF-FFPANEL-700

MATERIAL:
Toughened Safety Glass

DIMENSIONS:
L700mm x H1280mm x W12mm

800MM GLASS BALUSTRADE PANEL - FACE FIXED



SPECIFICATIONS:

- 12mm clear toughened glass
- Heat soaked to EN 14179
- 3mm radius corners
- 20mm holes
- Compatible w/ Top-mount Handrail only
- AS/NZS 2208 stamp with license No.

PRODUCT CODES:

GLASS PANEL: GF-FFPANEL-800

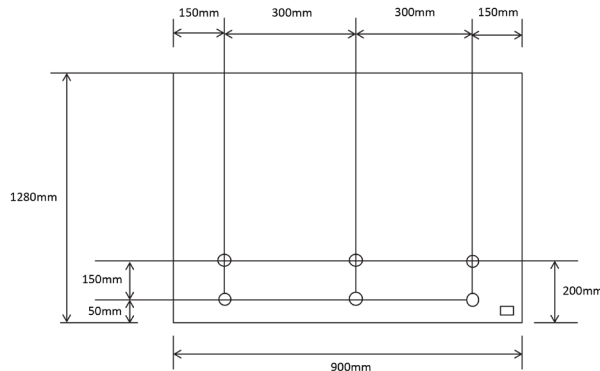
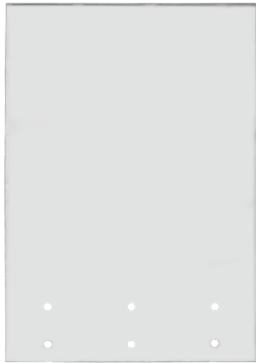
MATERIAL:
Toughened Safety Glass

DIMENSIONS:
L800mm x H1280mm x W12mm

GLASS PANELS FACE FIXED

***INCLUDES PRE-DRILLED HOLES**

900MM GLASS BALUSTRADE PANEL - FACE FIXED



SPECIFICATIONS:

- 12mm clear toughened glass
- Heat soaked to EN 14179
- 3mm radius corners
- 20mm holes
- Compatible w/ Top-mount Handrail only
- AS/NZS 2208 stamp with license No.

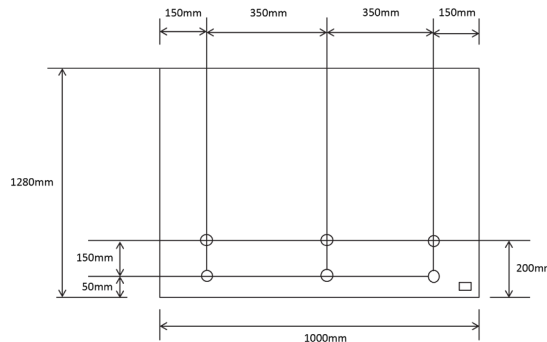
PRODUCT CODES:

GLASS PANEL: GF-FFPANEL-900

MATERIAL:
Toughened Safety Glass

DIMENSIONS:
L900mm x L1280mm x W12mm

1000MM GLASS BALUSTRADE PANEL - FACE FIXED



SPECIFICATIONS:

- 12mm clear toughened glass
- Heat soaked to EN 14179
- 3mm radius corners
- 20mm holes
- Compatible w/ Top-mount Handrail only
- AS/NZS 2208 stamp with license No.

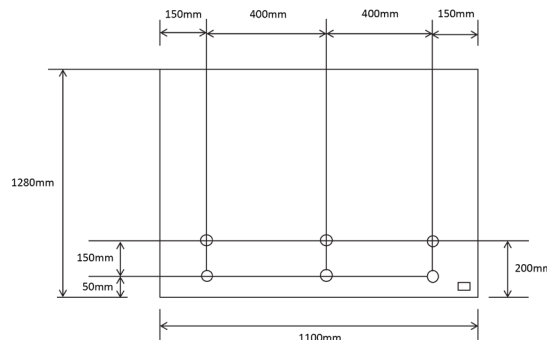
PRODUCT CODES:

GLASS PANEL: GF-FFPANEL-1000

MATERIAL:
Toughened Safety Glass

DIMENSIONS:
L1000mm x H1280mm x W12mm

1100MM GLASS BALUSTRADE PANEL - FACE FIXED



SPECIFICATIONS:

- 12mm clear toughened glass
- Heat soaked to EN 14179
- 3mm radius corners
- 20mm holes
- Compatible w/ Top-mount Handrail only
- AS/NZS 2208 stamp with license No.

PRODUCT CODES:

GLASS PANEL: GF-FFPANEL-1100

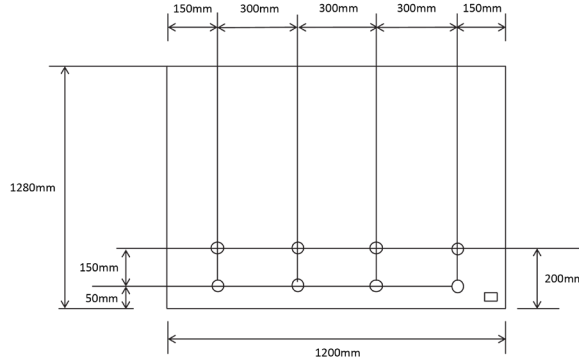
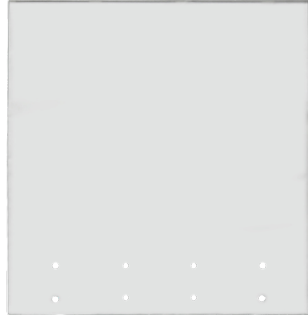
MATERIAL:
Toughened Safety Glass

DIMENSIONS:
L1100mm x H1280mm x W12mm

GLASS PANELS FACE FIXED

***INCLUDES PRE-DRILLED HOLES**

1200MM GLASS BALUSTRADE PANEL - FACE FIXED



SPECIFICATIONS:

- 12mm clear toughened glass
- Heat soaked to EN 14179
- 3mm radius corners
- 20mm holes
- Compatible w/ Top-mount Handrail only
- AS/NZS 2208 stamp with license No.

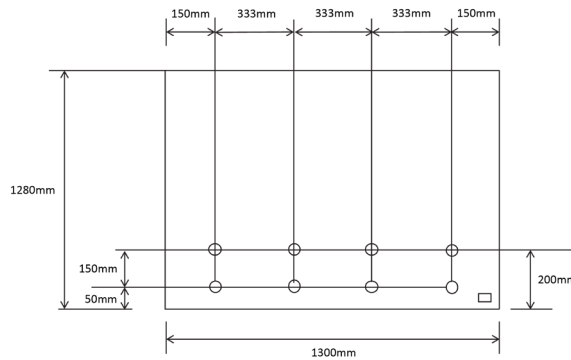
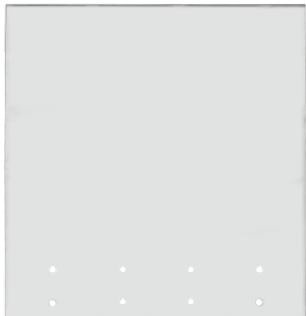
PRODUCT CODES:

GLASS PANEL: GF-FFPANEL-1200

MATERIAL:
Toughened Safety Glass

DIMENSIONS:
L1200mm x H1280mm x W12mm

1300MM GLASS BALUSTRADE PANEL - FACE FIXED



SPECIFICATIONS:

- 12mm clear toughened glass
- Heat soaked to EN 14179
- 3mm radius corners
- 20mm holes
- Compatible w/ Top-mount Handrail only
- AS/NZS 2208 stamp with license No.

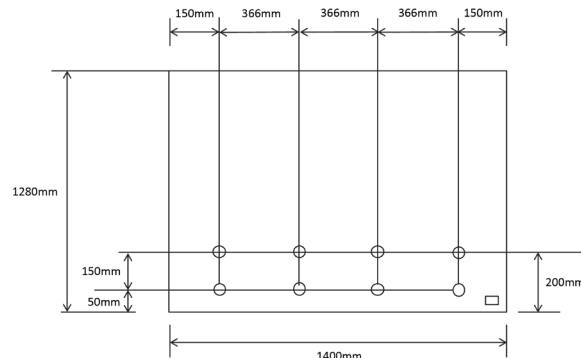
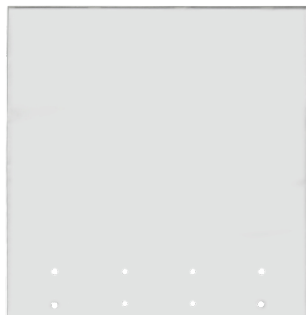
PRODUCT CODES:

GLASS PANEL: GF-FFPANEL-1300

MATERIAL:
Toughened Safety Glass

DIMENSIONS:
L1300mm x H1280mm x W12mm

1400MM GLASS BALUSTRADE PANEL - FACE FIXED



SPECIFICATIONS:

- 12mm clear toughened glass
- Heat soaked to EN 14179
- 3mm radius corners
- 20mm holes
- Compatible w/ Top-mount Handrail only
- AS/NZS 2208 stamp with license No.

PRODUCT CODES:

GLASS PANEL: GF-FFPANEL-1400

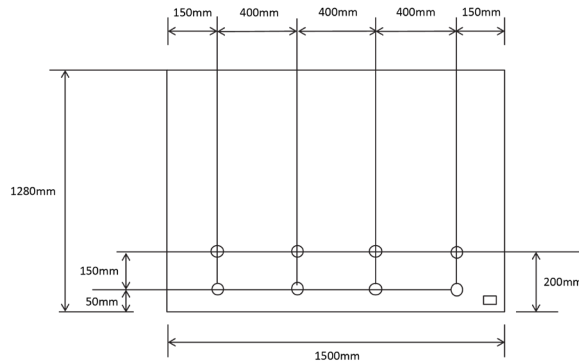
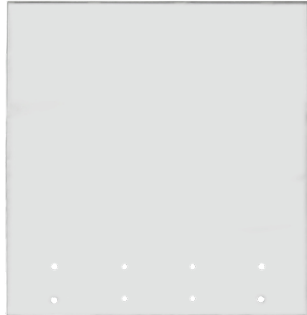
MATERIAL:
Toughened Safety Glass

DIMENSIONS:
L1400mm x H1280mm x W12mm

GLASS PANELS FACE FIXED

***INCLUDES PRE-DRILLED HOLES**

1500MM GLASS BALUSTRADE PANEL - FACE FIXED



SPECIFICATIONS:

- 12mm clear toughened glass
- Heat soaked to EN 14179
- 3mm radius corners
- 20mm holes
- Compatible w/ Top-mount Handrail only
- AS/NZS 2208 stamp with license No.

PRODUCT CODES:

GLASS PANEL: GF-FFPANEL-1500

MATERIAL:

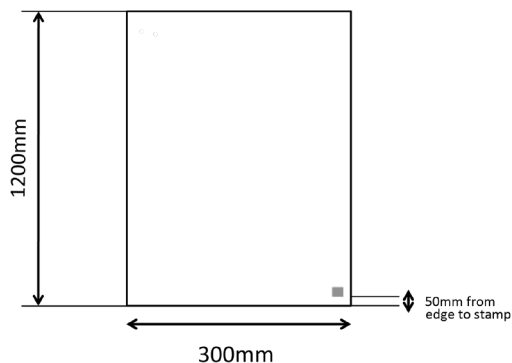
Toughened Safety Glass

DIMENSIONS:

L1500mm x H1280mm x W12mm

GLASS INFILL PANELS

300MM GLASS POOL INFILL PANEL



SPECIFICATIONS:

- 12mm clear toughened glass
- 3mm radius corners
- AS/NZS 2208 stamp with license No.

PRODUCT CODES:

GLASS INFILL PANEL: GF-INPANEL-300

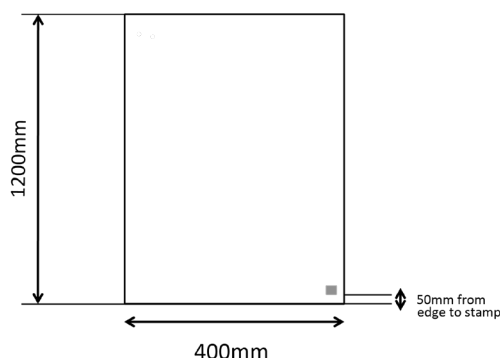
MATERIAL:

Toughened Safety Glass

DIMENSIONS:

L300mm x H1200mm x W12mm

400MM GLASS POOL INFILL PANEL



SPECIFICATIONS:

- 12mm clear toughened glass
- 3mm radius corners
- AS/NZS 2208 stamp with license No.

PRODUCT CODES:

GLASS INFILL PANEL: GF-INPANEL-400

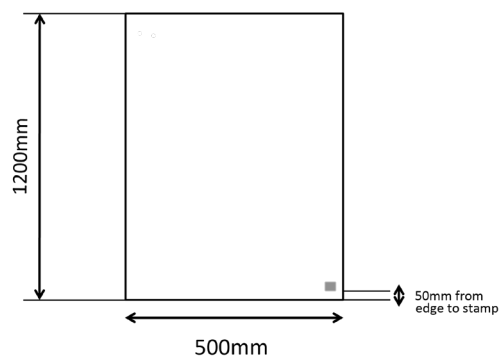
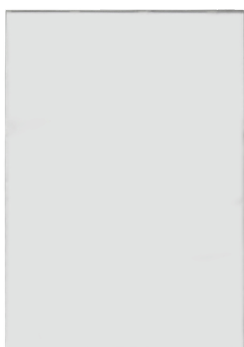
MATERIAL:

Toughened Safety Glass

DIMENSIONS:

L400mm x H1200mm x W12mm

500MM GLASS POOL INFILL PANEL



SPECIFICATIONS:

- 12mm clear toughened glass
- 3mm radius corners
- AS/NZS 2208 stamp with license No.

PRODUCT CODES:

GLASS INFILL PANEL: GF-INPANEL-500

MATERIAL:

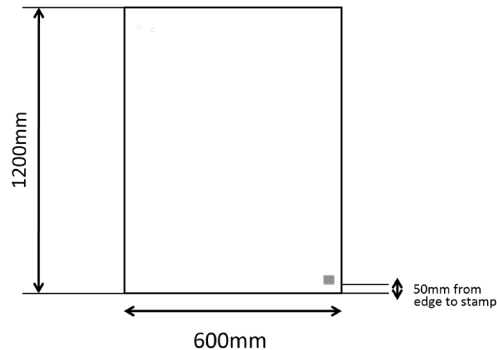
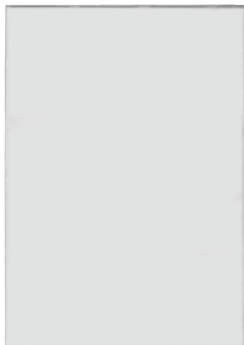
Toughened Safety Glass

DIMENSIONS:

L500mm x H1200mm x W12mm

GLASS INFILL PANELS

600MM GLASS POOL INFILL PANEL



SPECIFICATIONS:

- 12mm clear toughened glass
- 3mm radius corners
- AS/NZS 2208 stamp with license No.

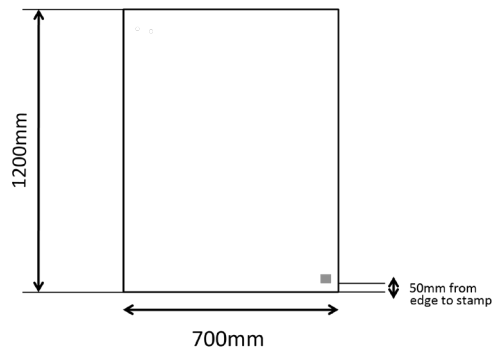
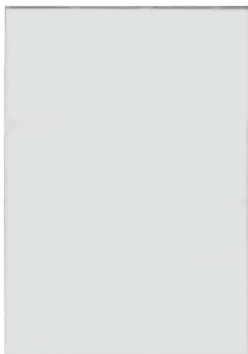
PRODUCT CODES:

GLASS INFILL PANEL: GF-INPANEL-600

MATERIAL:
Toughened Safety Glass

DIMENSIONS:
L600mm x H1200mm x W12mm

700MM GLASS POOL INFILL PANEL



SPECIFICATIONS:

- 12mm clear toughened glass
- 3mm radius corners
- AS/NZS 2208 stamp with license No.

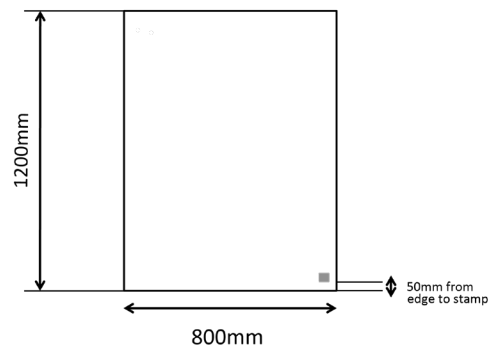
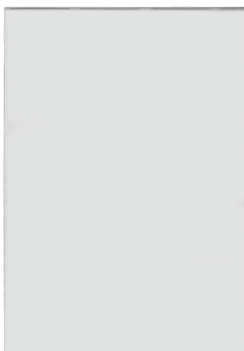
PRODUCT CODES:

GLASS INFILL PANEL: GF-INPANEL-700

MATERIAL:
Toughened Safety Glass

DIMENSIONS:
L700mm x H1200mm x W12mm

800MM GLASS POOL INFILL PANEL



SPECIFICATIONS:

- 12mm clear toughened glass
- 3mm radius corners
- AS/NZS 2208 stamp with license No.

PRODUCT CODES:

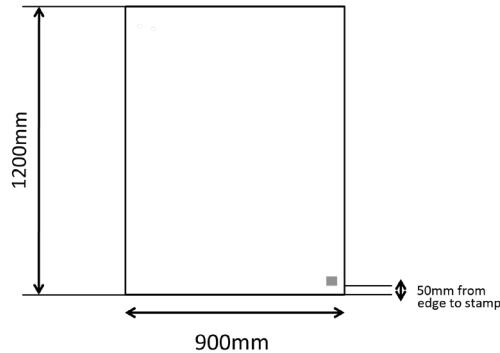
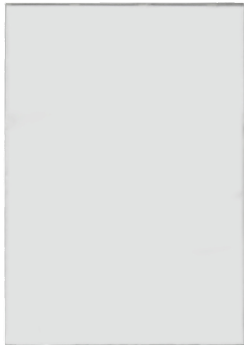
GLASS INFILL PANEL: GF-INPANEL-800

MATERIAL:
Toughened Safety Glass

DIMENSIONS:
L800mm x H1200mm x W12mm

GLASS INFILL PANELS

900MM GLASS POOL INFILL PANEL



SPECIFICATIONS:

- 12mm clear toughened glass
- 3mm radius corners
- AS/NZS 2208 stamp with license No.

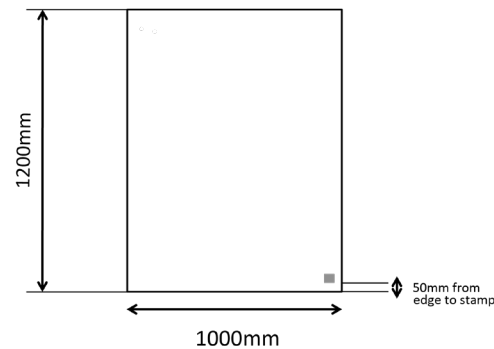
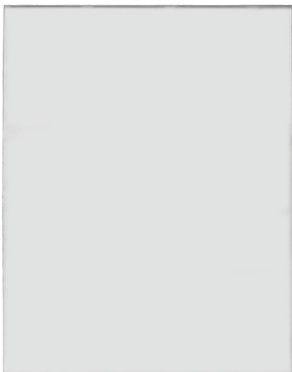
PRODUCT CODES:

GLASS INFILL PANEL: GF-INPANEL-900

MATERIAL:
Toughened Safety Glass

DIMENSIONS:
L900mm x H1200mm x W12mm

1000MM GLASS POOL INFILL PANEL



SPECIFICATIONS:

- 12mm clear toughened glass
- 3mm radius corners
- AS/NZS 2208 stamp with license No.

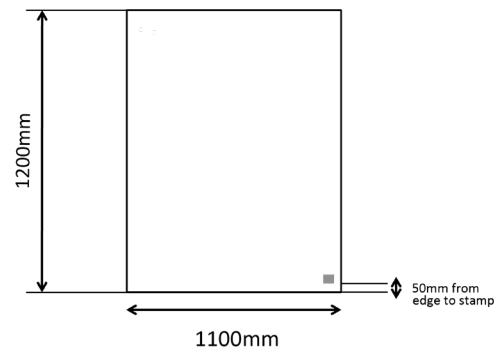
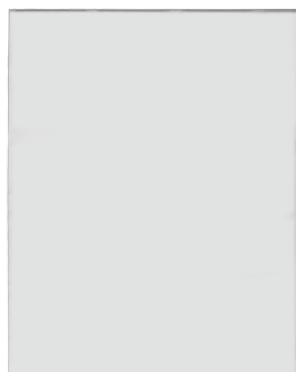
PRODUCT CODES:

GLASS INFILL PANEL: GF-INPANEL-1000

MATERIAL:
Toughened Safety Glass

DIMENSIONS:
L1000mm x H1200mm x W12mm

1100MM GLASS POOL INFILL PANEL



SPECIFICATIONS:

- 12mm clear toughened glass
- 3mm radius corners
- AS/NZS 2208 stamp with license No.

PRODUCT CODES:

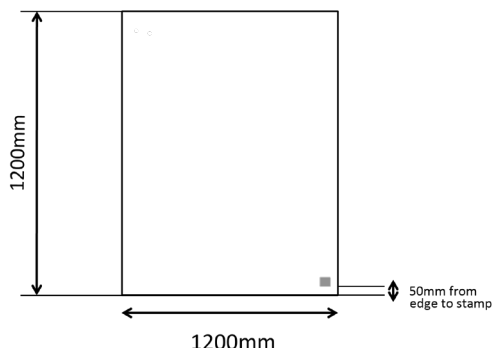
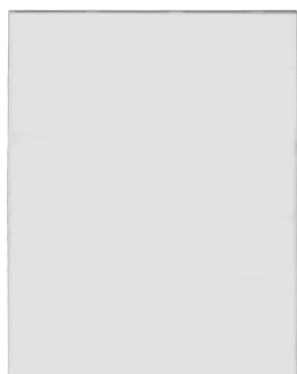
GLASS INFILL PANEL: GF-INPANEL-1100

MATERIAL:
Toughened Safety Glass

DIMENSIONS:
L1100mm x H1200mm x W12mm

GLASS INFILL PANELS

1200MM GLASS POOL INFILL PANEL



SPECIFICATIONS:

- 12mm clear toughened glass
- 3mm radius corners
- AS/NZS 2208 stamp with license No.

PRODUCT CODES:

GLASS INFILL PANEL: GF-INPANEL-1200

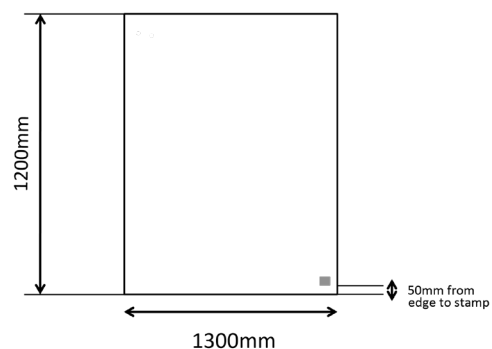
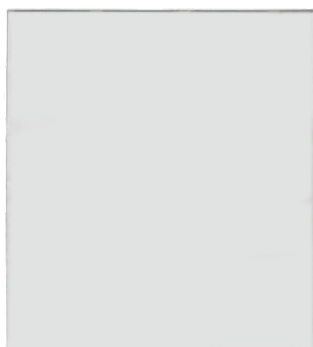
MATERIAL:

Toughened Safety Glass

DIMENSIONS:

L1200mm x H1200mm x W12mm

1300MM GLASS POOL INFILL PANEL



SPECIFICATIONS:

- 12mm clear toughened glass
- 3mm radius corners
- AS/NZS 2208 stamp with license No.

PRODUCT CODES:

GLASS INFILL PANEL: GF-INPANEL-1300

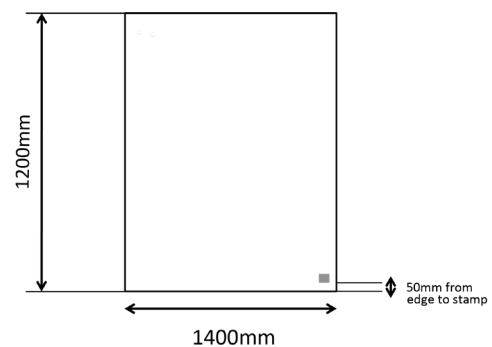
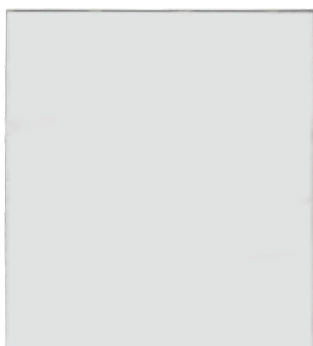
MATERIAL:

Toughened Safety Glass

DIMENSIONS:

L1300mm x H1200mm x W12mm

1400MM GLASS POOL INFILL PANEL



SPECIFICATIONS:

- 12mm clear toughened glass
- 3mm radius corners
- AS/NZS 2208 stamp with license No.

PRODUCT CODES:

GLASS INFILL PANEL: GF-INPANEL-1400

MATERIAL:

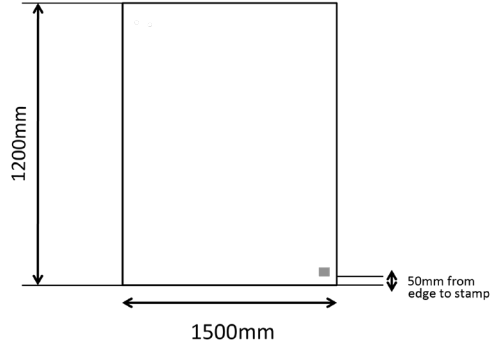
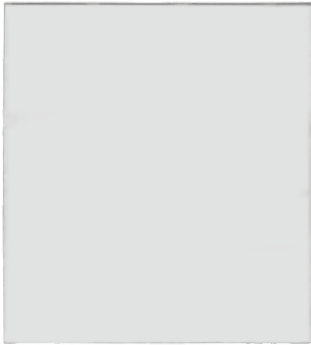
Toughened Safety Glass

DIMENSIONS:

L1400mm x H1200mm x W12mm

GLASS INFILL PANELS

1500MM GLASS POOL INFILL PANEL



SPECIFICATIONS:

- 12mm clear toughened glass
- 3mm radius corners
- AS/NZS 2208 stamp with license No.

PRODUCT CODES:

GLASS INFILL PANEL: GF-INPANEL-1500

MATERIAL:

Toughened Safety Glass

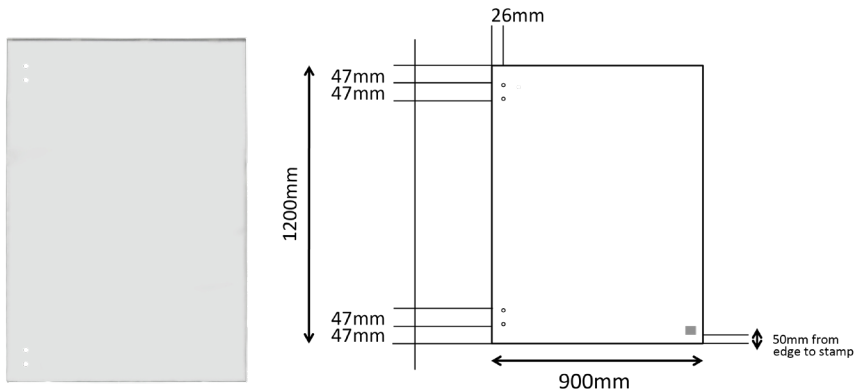
DIMENSIONS:

L1500mm x H1200mm x W12mm

GLASS HINGE PANELS

*INCLUDES PRE-DRILLED HOLES

900MM GLASS POOL HINGE PANEL



SPECIFICATIONS:

- 12mm clear toughened glass
- 3mm radius corners
- 14mm holes
- AS/NZS 2208 stamp with license No.

PRODUCT CODES:

GLASS HINGE PANEL: GF-HINGEPANEL-900

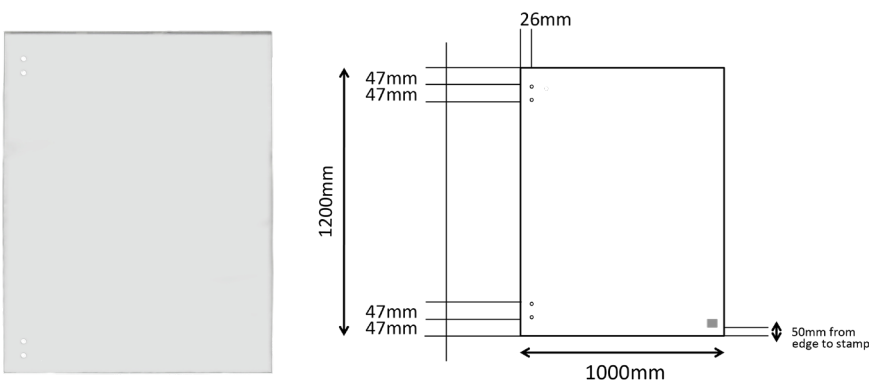
MATERIAL:

Toughened Safety Glass

DIMENSIONS:

L900mm x H1200mm x W12mm

1000MM GLASS POOL HINGE PANEL



SPECIFICATIONS:

- 12mm clear toughened glass
- 3mm radius corners
- 14mm holes
- AS/NZS 2208 stamp with license No.

PRODUCT CODES:

GLASS HINGE PANEL: GF-HINGEPANEL-1000

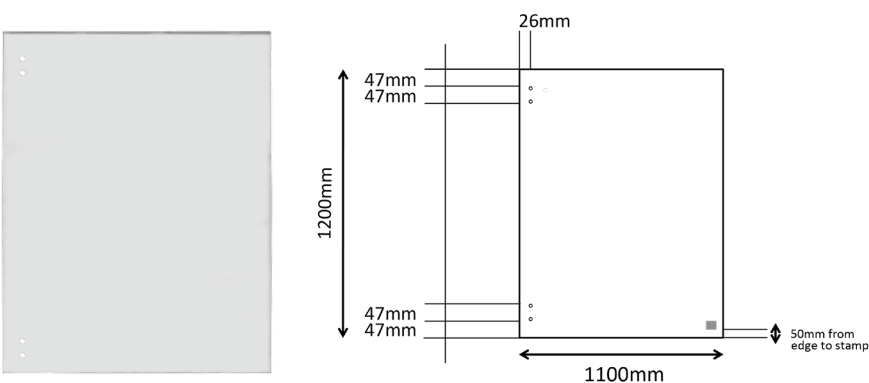
MATERIAL:

Toughened Safety Glass

DIMENSIONS:

L1000mm x H1200mm x W12mm

1100MM GLASS POOL HINGE PANEL



SPECIFICATIONS:

- 12mm clear toughened glass
- 3mm radius corners
- 14mm holes
- AS/NZS 2208 stamp with license No.

PRODUCT CODES:

GLASS HINGE PANEL: GF-HINGEPANEL-1100

MATERIAL:

Toughened Safety Glass

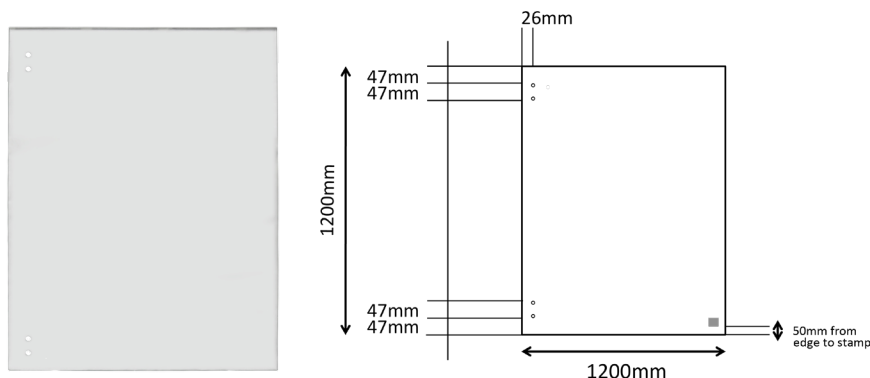
DIMENSIONS:

L1100mm x H1200mm x W12mm

GLASS HINGE PANELS

*INCLUDES PRE-DRILLED HOLES

1200MM GLASS POOL HINGE PANEL



SPECIFICATIONS:

- 12mm clear toughened glass
- 3mm radius corners
- 14mm holes
- AS/NZS 2208 stamp with license No.

PRODUCT CODES:

GLASS HINGE PANEL: GF-HINGEPANEL-1200

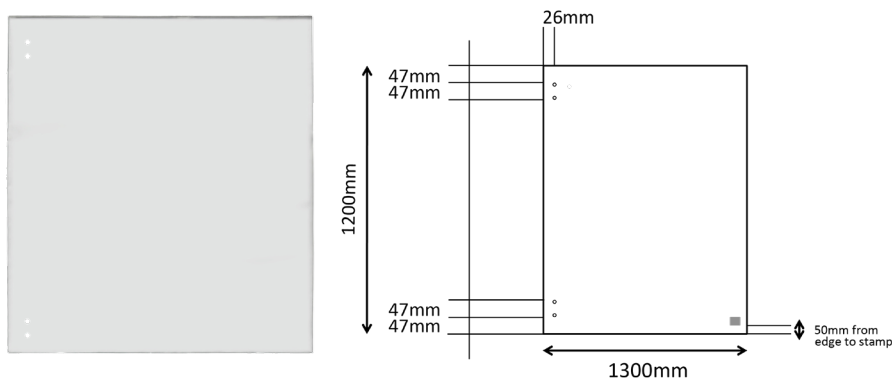
MATERIAL:

Toughened Safety Glass

DIMENSIONS:

L1200mm x H1200mm x W12mm

1300MM GLASS POOL HINGE PANEL



SPECIFICATIONS:

- 12mm clear toughened glass
- 3mm radius corners
- 14mm holes
- AS/NZS 2208 stamp with license No.

PRODUCT CODES:

GLASS HINGE PANEL: GF-HINGEPANEL-1300

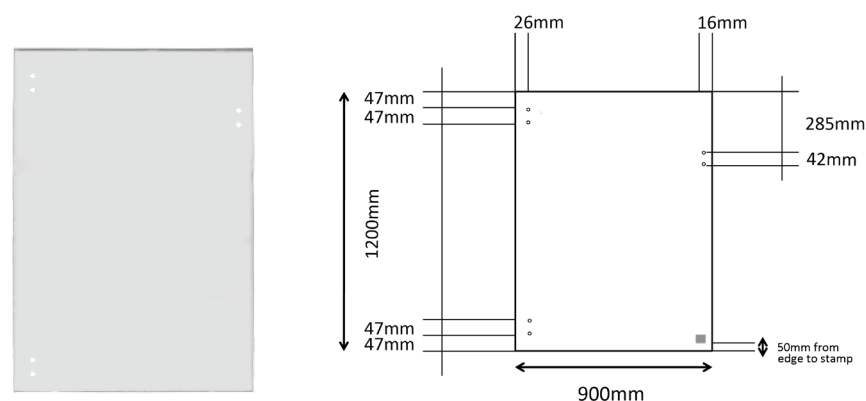
MATERIAL:

Toughened Safety Glass

DIMENSIONS:

L1300mm x H1200mm x W12mm

900MM GLASS GATE PANEL



SPECIFICATIONS:

- 12mm clear toughened glass
- 3mm radius corners
- 8mm holes
- AS/NZS 2208 stamp with license No.

PRODUCT CODES:

GLASS GATE: GF-GATEPANEL-900

MATERIAL:

Toughened Safety Glass

DIMENSIONS:

L900mm x H1200mm x W12mm